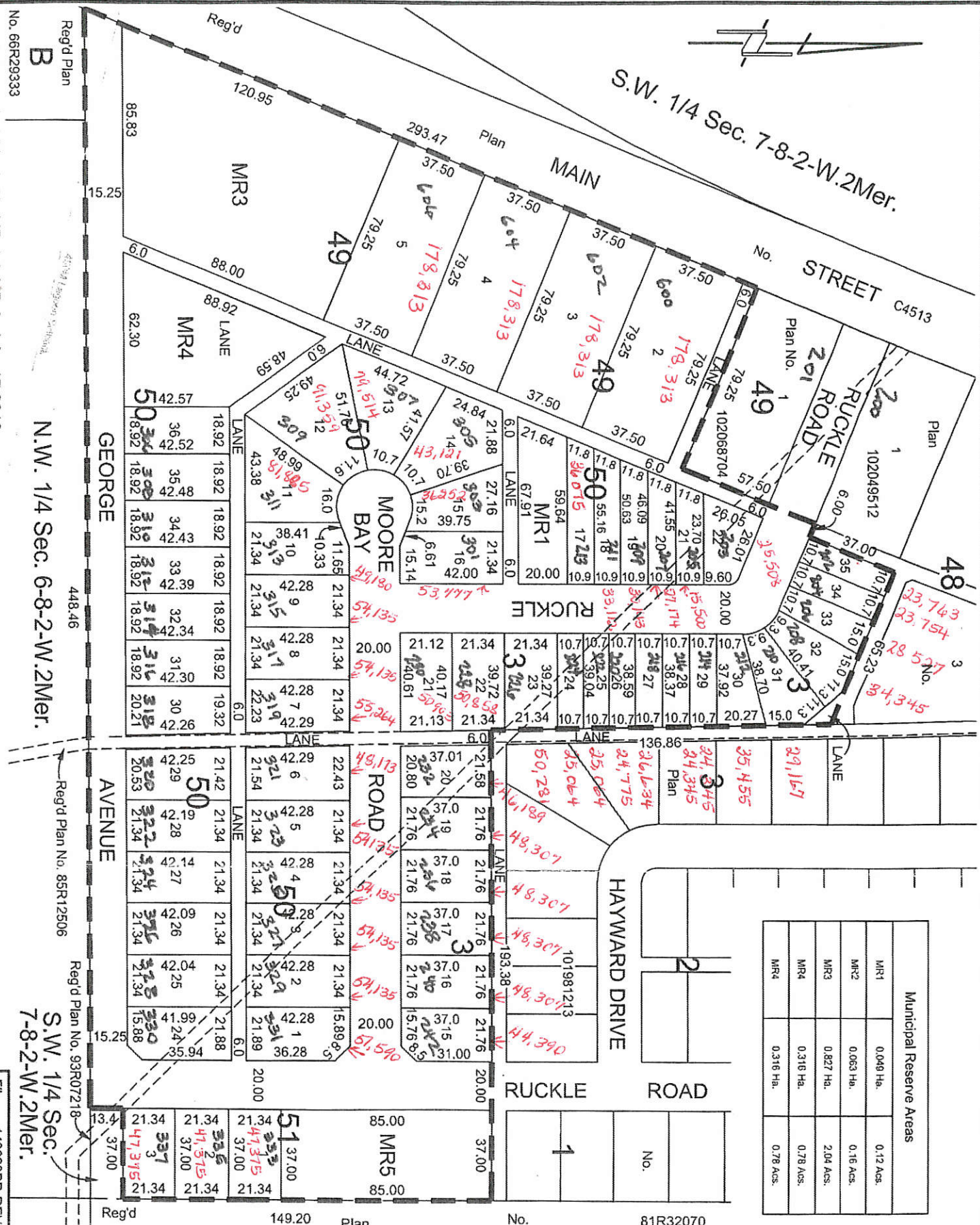




S.W. 1/4 Sec. 7-8-2-W.2Mer.



Municipal Reserve Areas		
MR1	0.048 Ha.	0.12 Acs.
MR2	0.063 Ha.	0.16 Acs.
MR3	0.827 Ha.	2.04 Acs.
MR4	0.316 Ha.	0.78 Acs.

Reg'd Plan No. 66R29333

Reg'd Plan B

N.W. 1/4 Sec. 6-8-2-W.2Mer.

Reg'd Plan No. 85R12506

Reg'd Plan No. 93R07218

S.W. 1/4 Sec. 7-8-2-W.2Mer.

File: 143820PR-REVS

448.46

149.20

81R32070